

Nissan Patrol Reference Document

EARTHING ISSUES

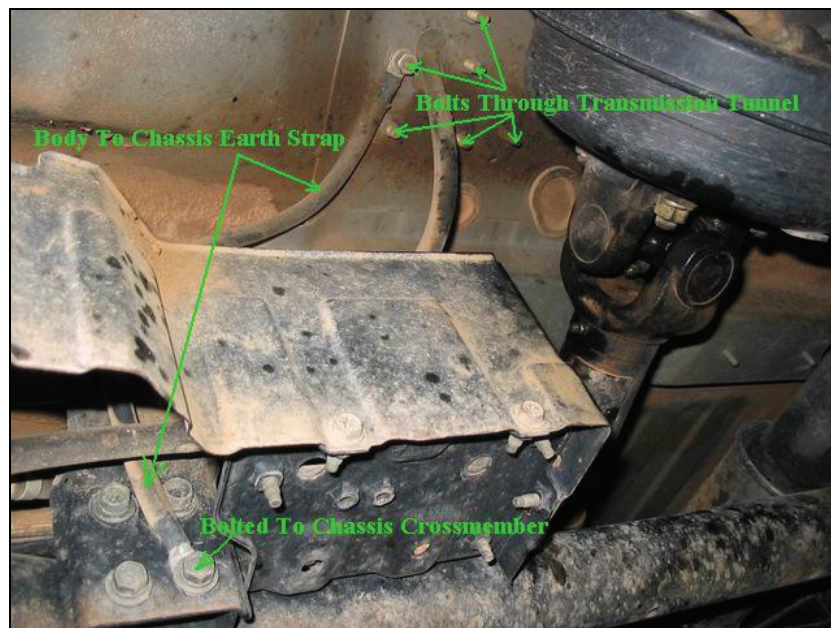
Most of us with ZD3.0's will notice that you can start getting electrical problems over the years. In my case it was within the first 6 months when the cruise control started resetting itself.

There are a multitude of problems that can be fixed with this additional strap. With GU4 2005 model the Nissan dealers will put an additional earthing strap from the body of the vehicle to the chassis. Unfortunately my dealer did not remove the rust proofing bitumen first so it never had a good contact to the metal chassis.

Earthing straps pre made with connectors already crimped can be obtained from just about any auto store. They range in cost from \$10 - \$20 so it's a cheap fix.

Has been known to fix the following issues, but is not limited to;

- Cruise control reset
- Keyless remote not working properly or at all
- Sub tank light coming on for no reason
- Radio reception greatly improved
- Dimming head lights when motor slows down
- Instrument cluster issues



Heres one a forum member (chaz) did earlier

The ZD3.0 is particularly sensitive to current drawer so you should always clean your battery terminals. Some think its because it has more electronics than the 4.2.